

Introducing G

Introducing G...
The second line in
the high staff is **G**.



To find the **F#** key,
go forward from F to
the very next key.



A Sharp Piece

(RIGHT-HAND MUSIC)
use any 3 successive R.H. fingers

© Mayron Cole

(orchestrated accompaniment has a 2 measure count-in)



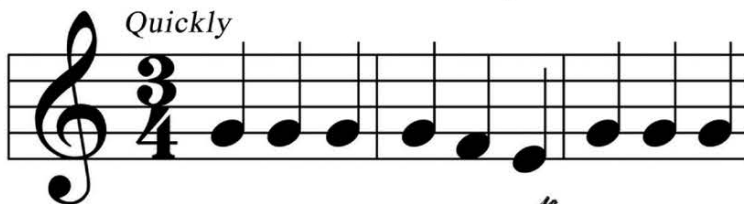
Optional
Left Hand
Notes:



Running in Circles

(RIGHT-HAND MUSIC)

use any 3 successive R.H. fingers



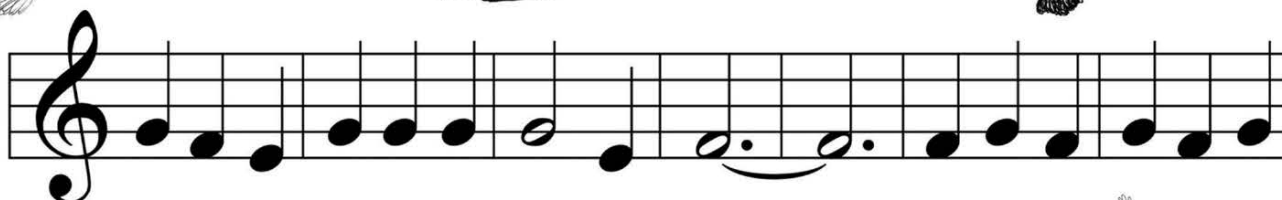
© Mayron Cole



1



3



4

5

6

7

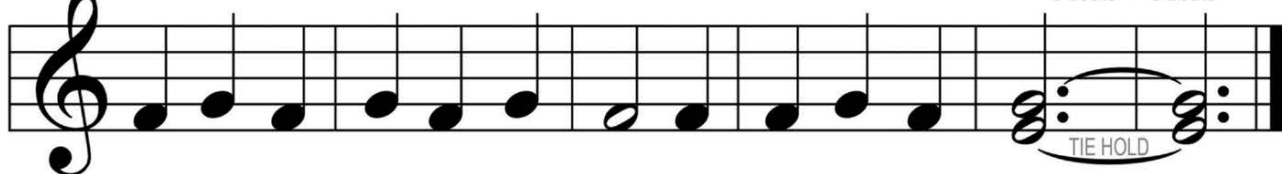
8

9

10



3 beats + 3 beats



11

12

13

14

15

16



Fourteen Birds

(RIGHT-HAND MUSIC)

use any 3 successive R.H. fingers

© Mayron Cole



Optional
Left Hand
Notes:

C

C

C

G

G

G



C

C

C

G#

C

C

G

G

C

Indian Campfires, Little Church Bells, & Ring Those Bells!


D. C. al Fine is an Italian phrase that means to “go back to the beginning and play to the *Fine*” (pronounced FEE-nay). *Fine* means “The End” in Italian. In Ring Those Bells! on page 40, you will play measures 1 through 12, then go back to the beginning and play measures 1 through 4 and stop.

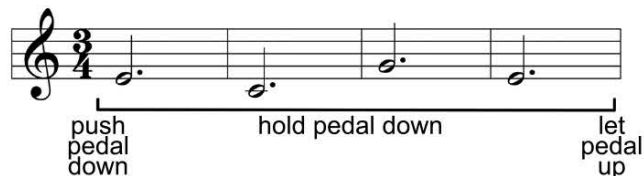
What two notes will you play at the same time in measure 16 of Indian Campfires (page 38)? _____ & _____

What two notes will you play at the same time in measure 16 of Little Church Bells (page 39)? _____ & _____

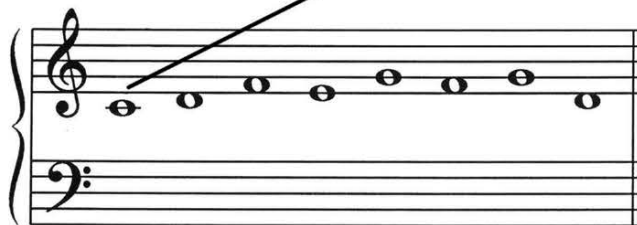
Once a note has been sharped or flatted, it remains sharped or flatted for the rest of the measure unless a natural sign, \natural , cancels it out.



This  is a pedal mark that tells you to push down the pedal at the far right. The far right pedal is called the damper pedal.



Write the letter name of these notes on the blanks below. Then, draw a line from each note to its corresponding key on the keyboard.



LETTER NAME: C _____



Indian Campfires


© Mayron Cole


(RIGHT-HAND MUSIC)

use all five R.H. fingers


(orchestrated accompaniment has a 2 measure count-in)

DO YOU KNOW?

This  is a _____ (tie hold or fermata); it means to hold down the key a little longer.

This  is the _____ - Clef because it was originally a big letter G.

This  is the _____ - Clef because it was originally a big letter F.

Once a note has been sharped or flatted, it remains that way for the rest of the measure unless a natural sign, , cancels it out. _____ (yes or no)

A _____ (tie hold or time signature) means to strike a key and keep holding the key down for the combined counts of both of the tied notes.



Little Church Bells

(RIGHT-HAND MUSIC)

use all five R.H. fingers



© Mayron Cole

(orchestrated accompaniment has a 2 measure count-in)

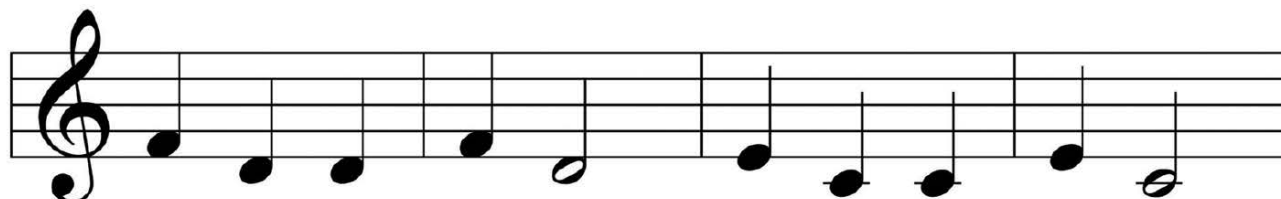


1

2

3

4

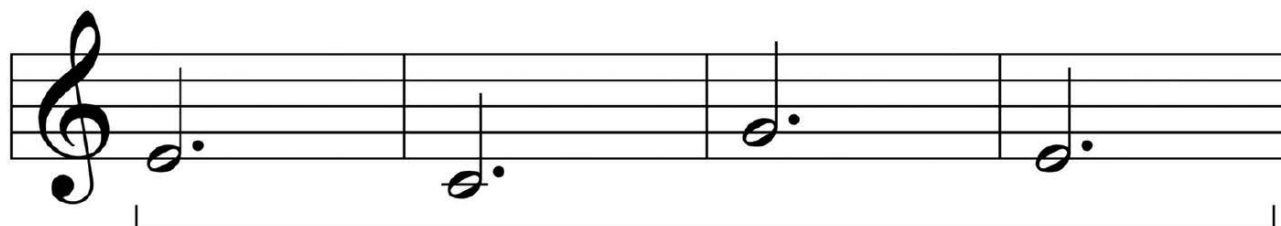


5

6

7

8

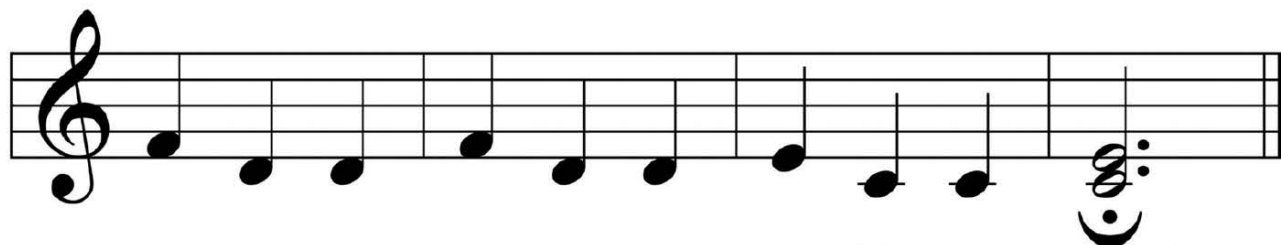


9

10

11

12



13

14

15

16

Ring Those Bells!

(RIGHT-HAND MUSIC)

use all five R.H. fingers

© Mayron Cole

(orchestrated accompaniment has a 2 measure count-in)

Slowly

1 2

3 4 *Fine*
(The End)

5 6 7 8

9 10 11 12 *D.C. al Fine*

